

*lillyella* STITCHERY

# SUGAR BABY



A FOUNDATION PAPER  
PIECING PATTERN

THREE BLOCK SIZES:  
5", 6" and 8" SQUARE

SKILL LEVEL:  
ADV. BEGINNER - INTERMEDIATE

This pattern is designed for the advanced beginner with paper piecing experience. The 5" block could be considered intermediate because of the small pieces. The pattern includes three block sizes with both left and right facing hummingbird options. Also included are directions for simplifying the piecing, as well as paper piecing tips, coloring pages, and planning diagrams. Please read through the entire pattern before beginning. Share your photos with [#sugarbabypattern!](#)

## *pattern pieces*

The pattern pieces can be found on pages 4 - 11 and are labeled with the finished block size (5", 6" or 8") and left facing or right facing. REMEMBER that your pattern pieces will be opposite of what the finished piece will be.

Each block has six sections labeled letters A - F. Enlarged section diagrams can be found on pages 22 - 24.

Print the pattern pieces at 100%. There is a 1" scale block on each page which you can measure as a test. If it does not measure 1", check your printer's scale settings.

A 1/4" seam allowance is included around each section and indicated by the outermost dashed line. Trim your paper pattern pieces outside of this line.

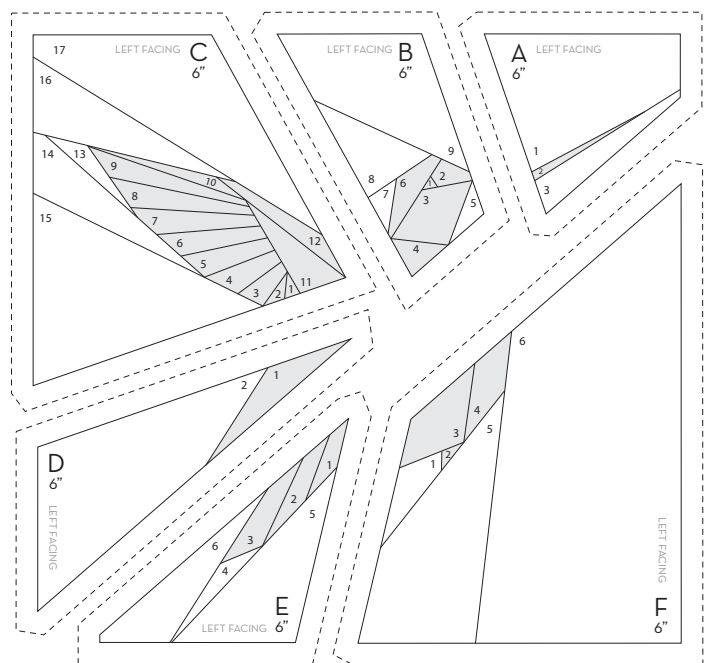
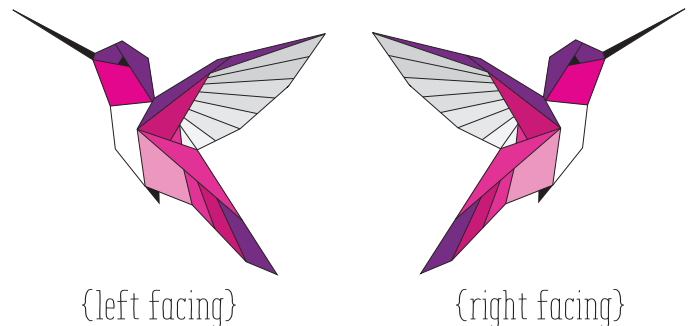
## *assembly*

Foundation piece each section and trim to the 1/4" dashed seam allowance line. (See notes on next page for more details on these steps.)

Assemble the sections in the following order:

1. Sew A to B, C to D, and E to F.
2. Join the AB unit with the CD unit.
3. Join this to the EF unit.

I prefer to press my seams open, but they can be pressed any way you prefer.



## variations

This pattern can easily be modified to make piecing easier or simply to create a different look. You can eliminate some segments for a simplified version or more for a silhouette look. The diagrams FIGS A & B shown to the right are not included in the pattern pieces, but are shown as an example of the directions explained below.

For the simplified version, to eliminate the eye on section B, treat segments 1 & 2 as one piece, then continue piecing with segment 3 (FIG A). To simplify the wing on section C, treat segments 1 thru 9 as one piece, then continue piecing in numeric order with 10 thru 17 (FIG A). The same method can be used to simplify the tail (section E) and the belly and foot (section F). On the 5" sample block I created, I did not piece in the eye, but embroidered it afterward and it worked out great!

To create the silhouette version, you will do the same thing, but to a greater extent. In each section, all pieces of the hummingbird will be treated as one piece (FIG B). When combining segments, simply skip all numbers contained within that segment and continue piecing in numeric order. For example, on section B segments 1, 2, 3, 4, & 6 will be one piece placed first and then you will add segment 5, followed by segments 7 thru 9 (FIG B).

## notes & tips

Though fabric requirements will vary based on selections, placement, and technique, I used a thoughtfully cut 10" square for the background of the 5" block, to give a reference.

This pattern requires some precision and double checking of your work to ensure your sections line up properly. Following are a few tips that will help.

When trimming sections after piecing, I only trim the sides of sections that will be joined together, rather than trimming around an entire piece. I can then trim an entire unit after it is pieced to ensure an accurate size and smooth seam edge. Though paper piecing does lend itself to precision by nature, even minor inconsistencies in seam allowances can add up over the course of assembling several sections. For example, when joining sections A & B, I will only the left edge of section A and only the right edge of section B, then I will join the sections. I do the same for C & D and once A thru D are joined, I then trim the full bottom edge that will join to EF.

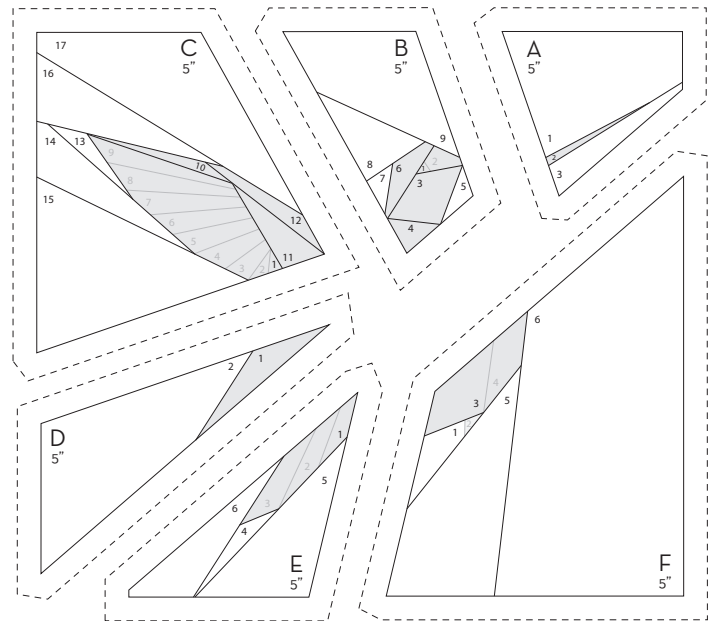
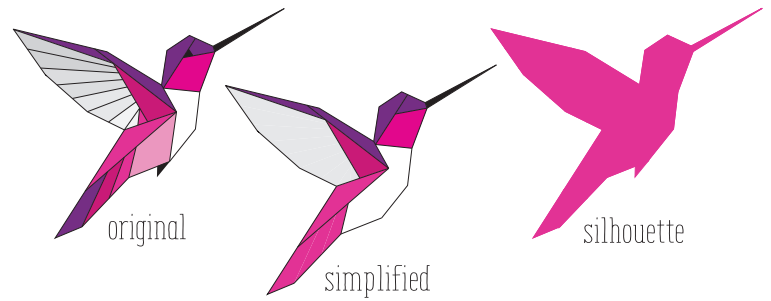


FIG A {simplified}

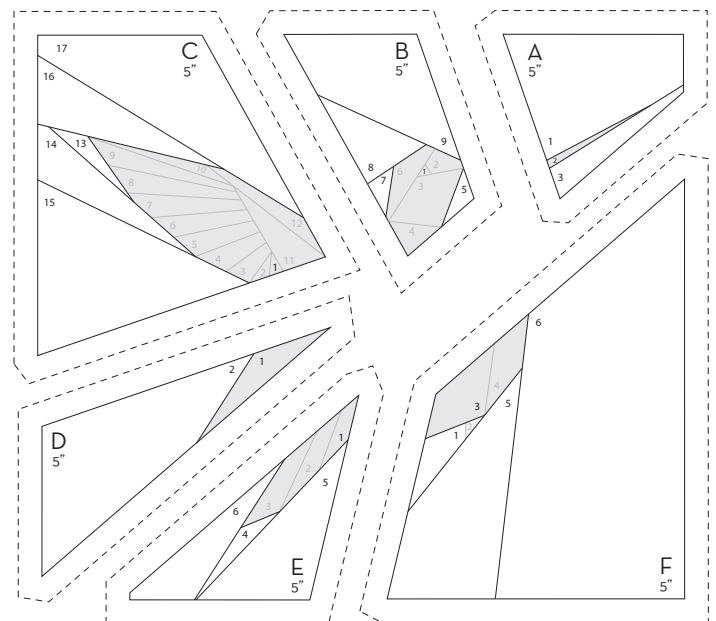


FIG B {silhouette}



## notes & tips (cont.)

Be mindful and consistent when trimming your sections to the 1/4" dashed seam allowance line. Place your ruler in the same position along the line every time you trim a section, whether you are directly on the line or slightly to one side or the other. This will help ensure that all your sections piece together with equal seam allowances.

After piecing sections, remove the paper from the sewn seam allowance only and then press your seams as flat as possible, pressing first from the back and then the front of your piece. Removing the paper helps to reduce bulk and achieve a flatter seam resulting in a more accurately sized piece.

When joining sections, use the areas circled in pink on Figure C as reference points for checking your alignment. At this step, I use thread colors that match my fabric to help minimize the chance of seeing stitches. Focusing on the circled areas only, pin or clip your sections together within the seam allowance area and then fold the sections away from each to check your alignment. When it looks correct, sew your seam with a few stitches and a slightly longer stitch over this area only. Check your work and adjust if needed (the longer stitch length makes it easier to unpick stitches). Repeat this same process in other areas along the seam if needed. Once your alignment is good, sew the entire seam using a smaller stitch length.

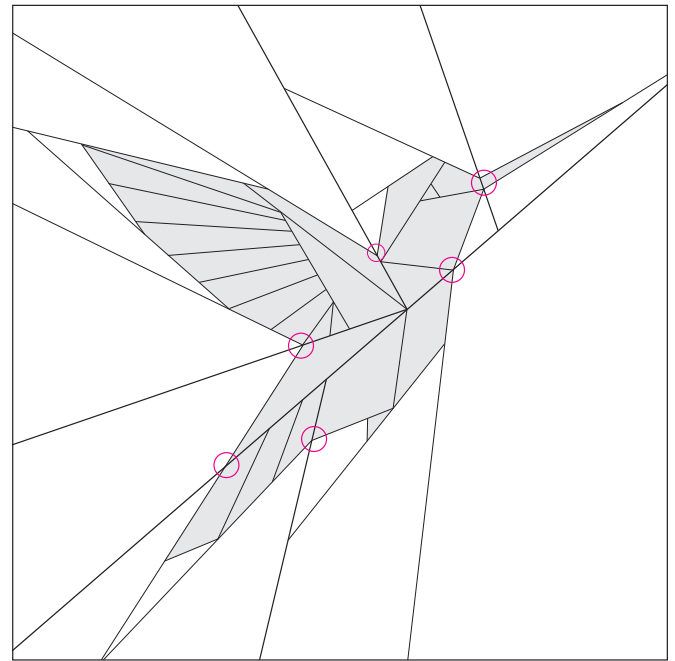


FIG C



Check the hashtag [#sugarbabypattern](#) Instagram and Facebook for more helpful tips & inspiration!

## TERMS OF USE

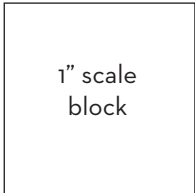
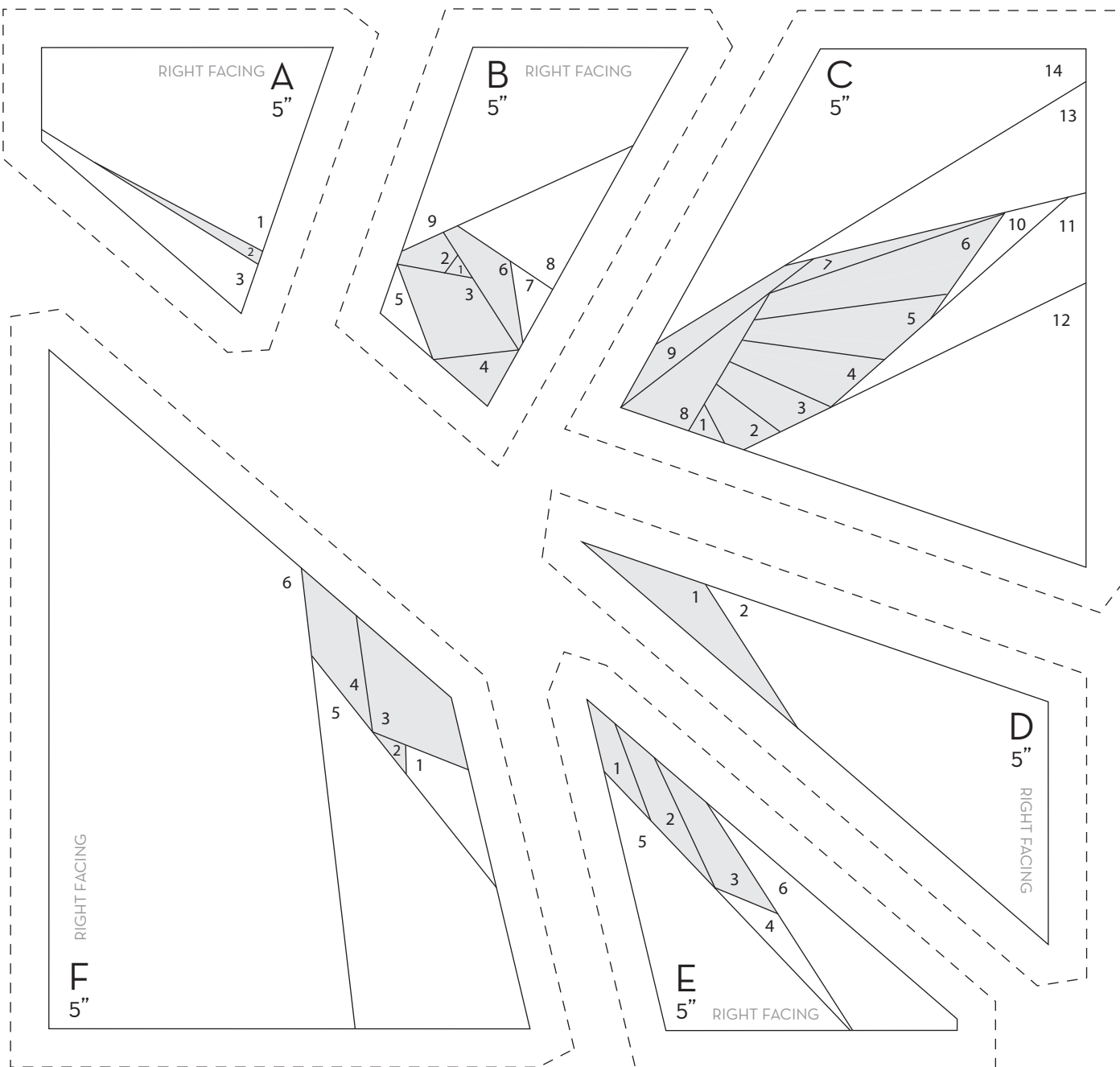
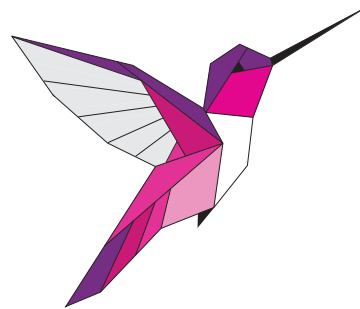
This pattern is for personal use and may not be copied or distributed. You may sell handmade items made from this pattern under these conditions:

- Credit for the pattern must be given as 'lillyella stitchery'
- Item must be sewn by you on a small scale only, no mass production



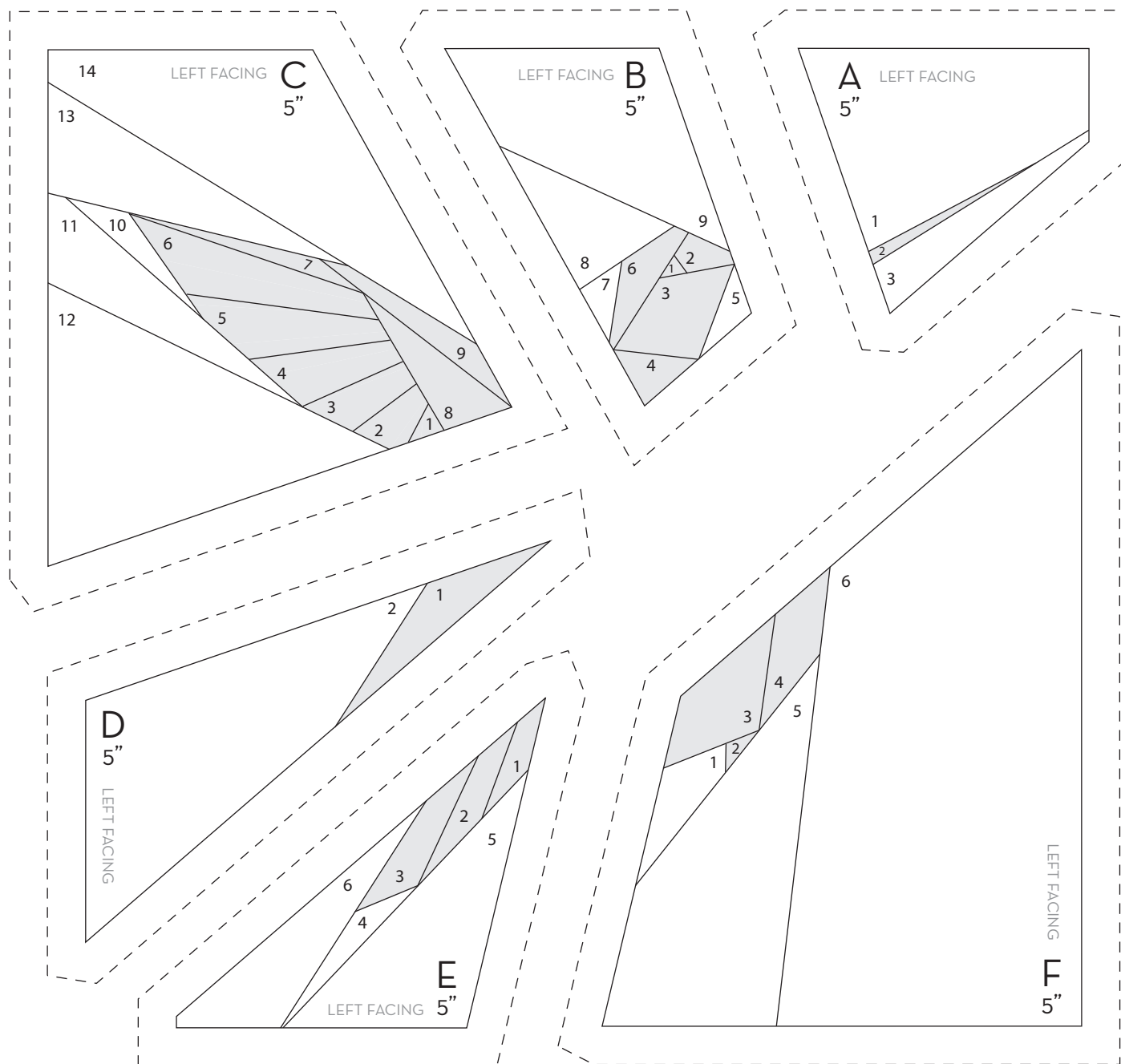
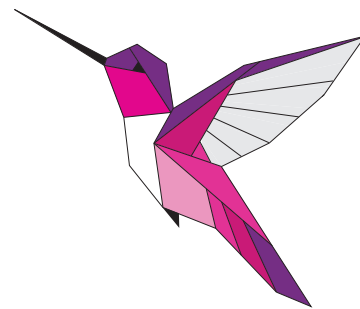
# SUGAR BABY

RIGHT FACING · 5"



# SUGAR BABY

LEFT FACING · 5"



1" scale  
block



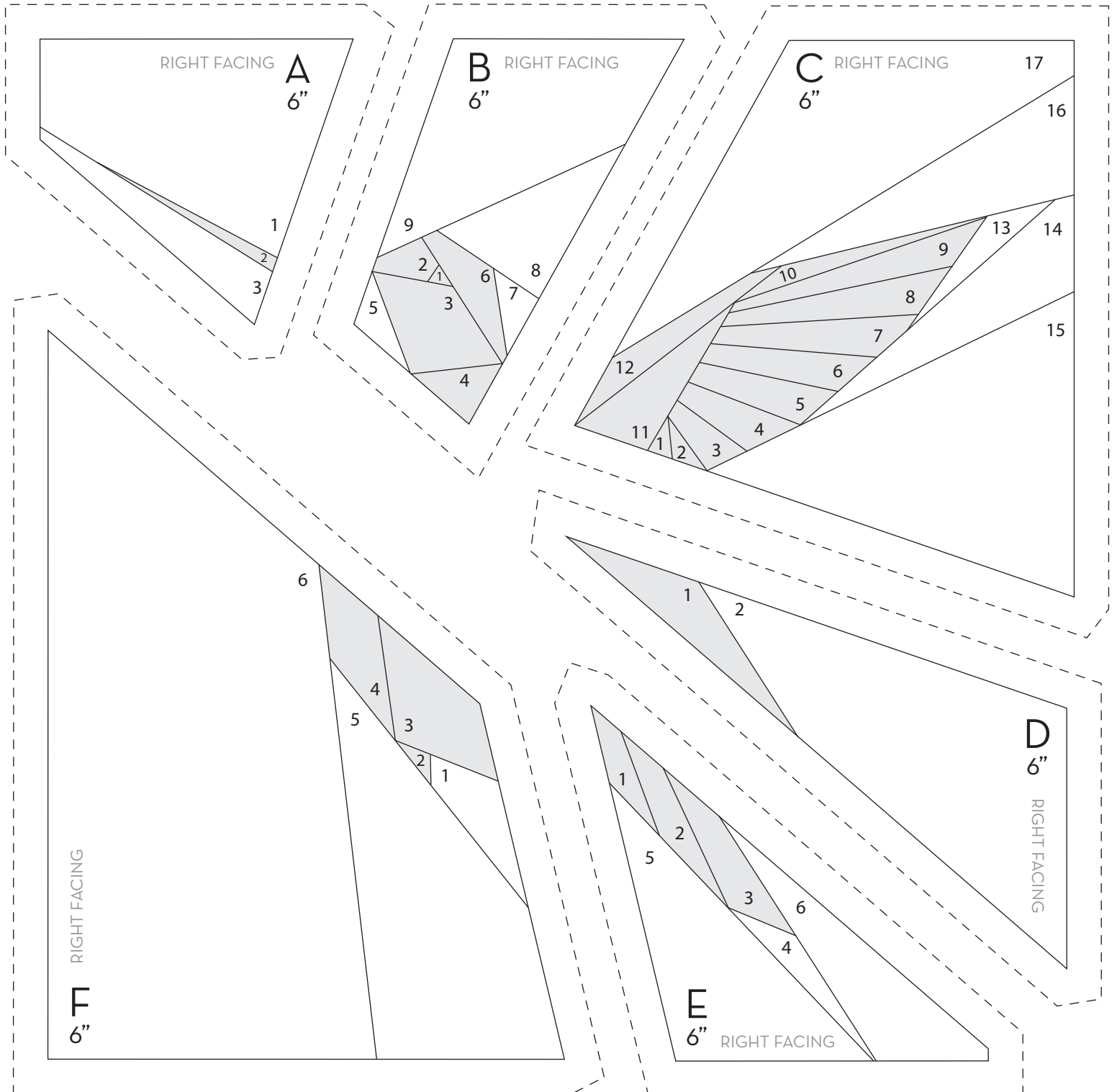


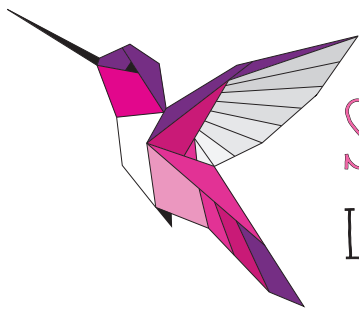


# SUGAR BABY

## RIGHT FACING - 6"

1" scale  
block

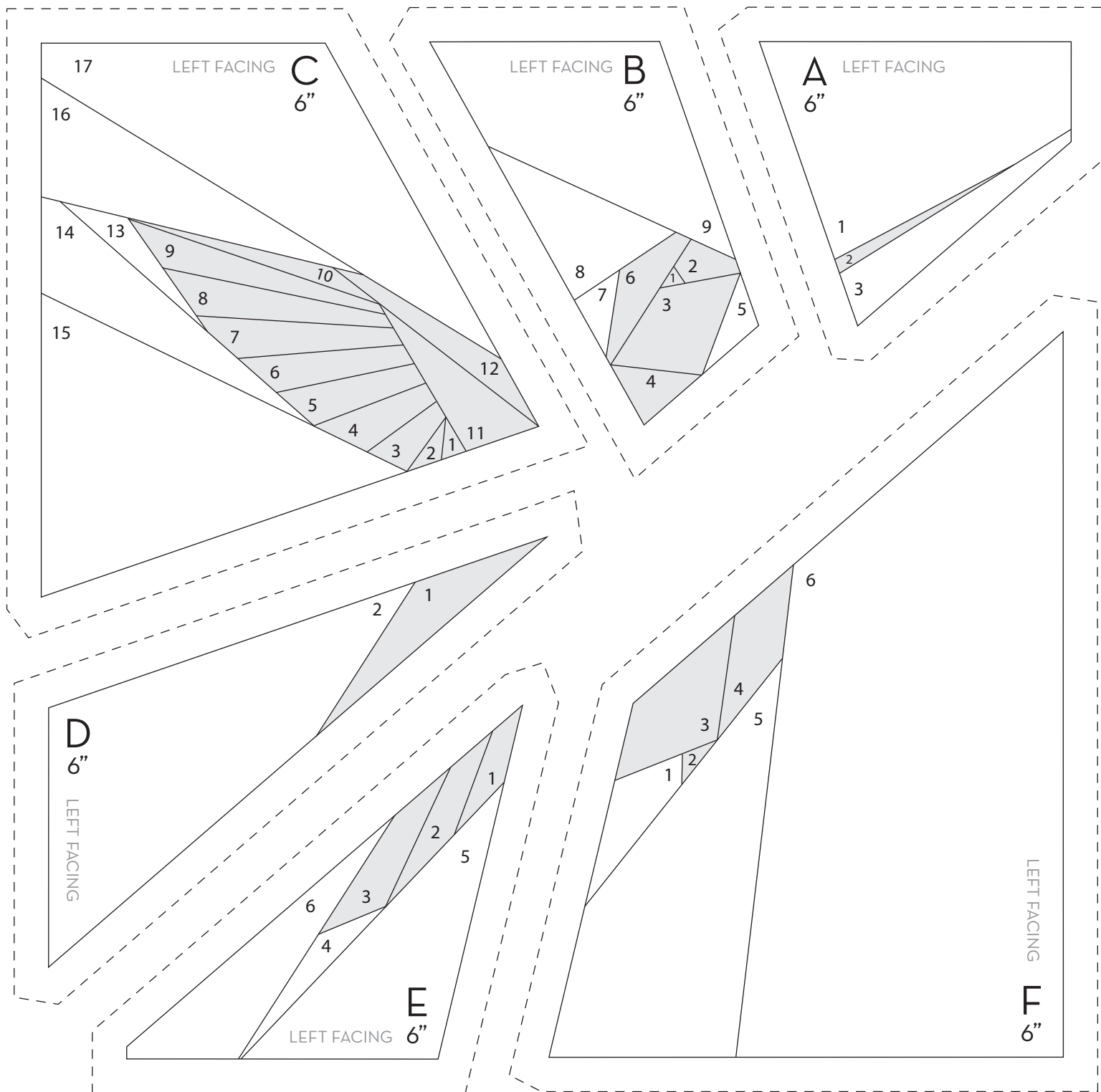


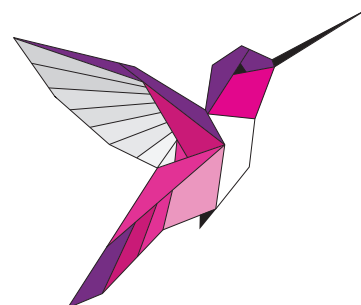
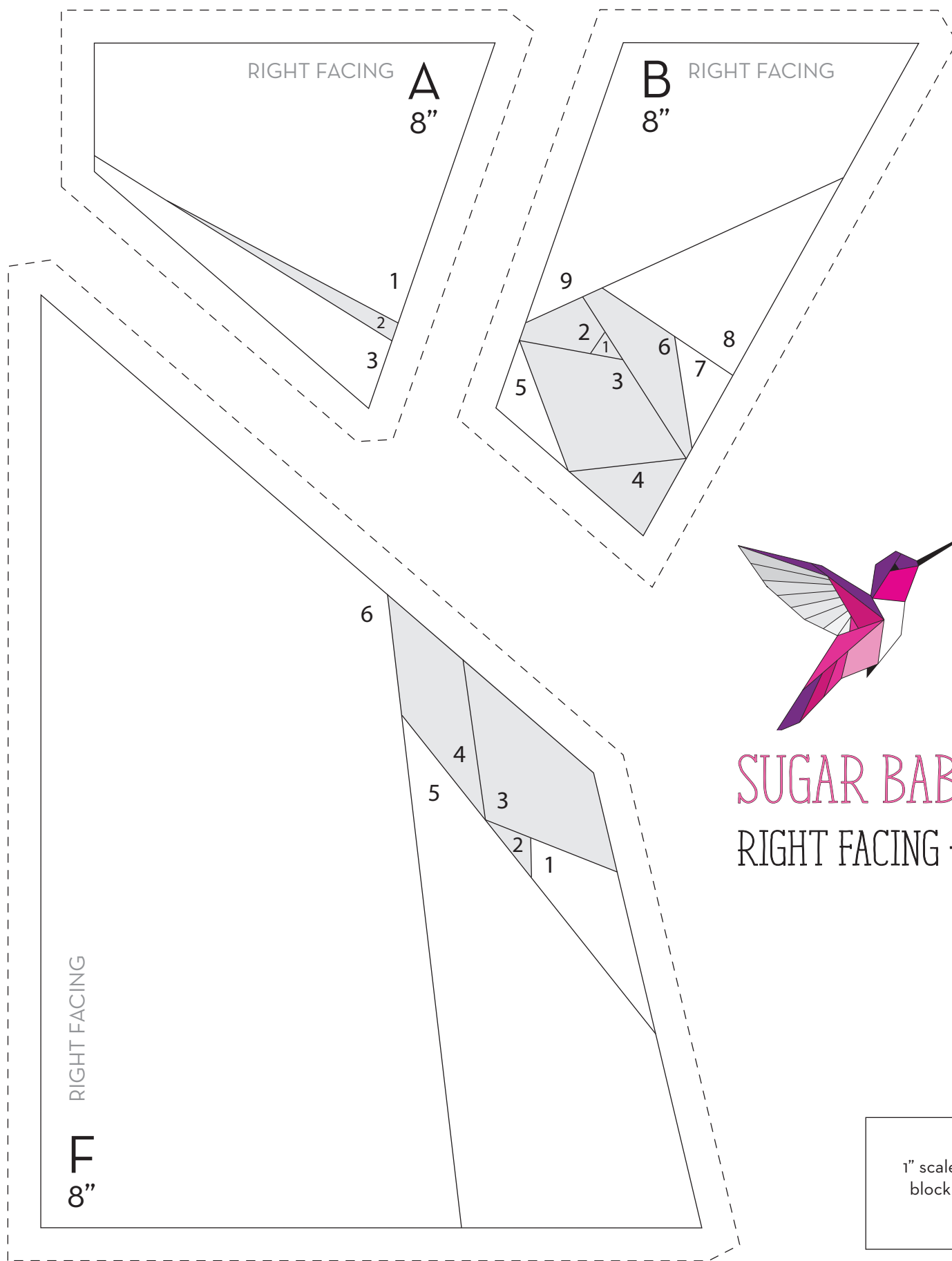


# SUGAR BABY

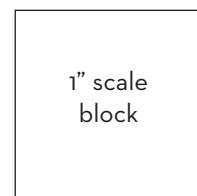
LEFT FACING · 6"

1" scale  
block

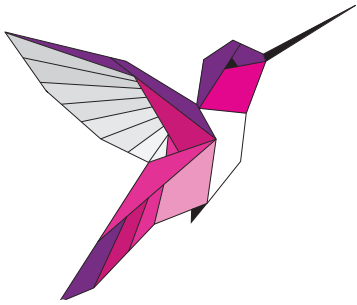




# SUGAR BABY RIGHT FACING · 8"

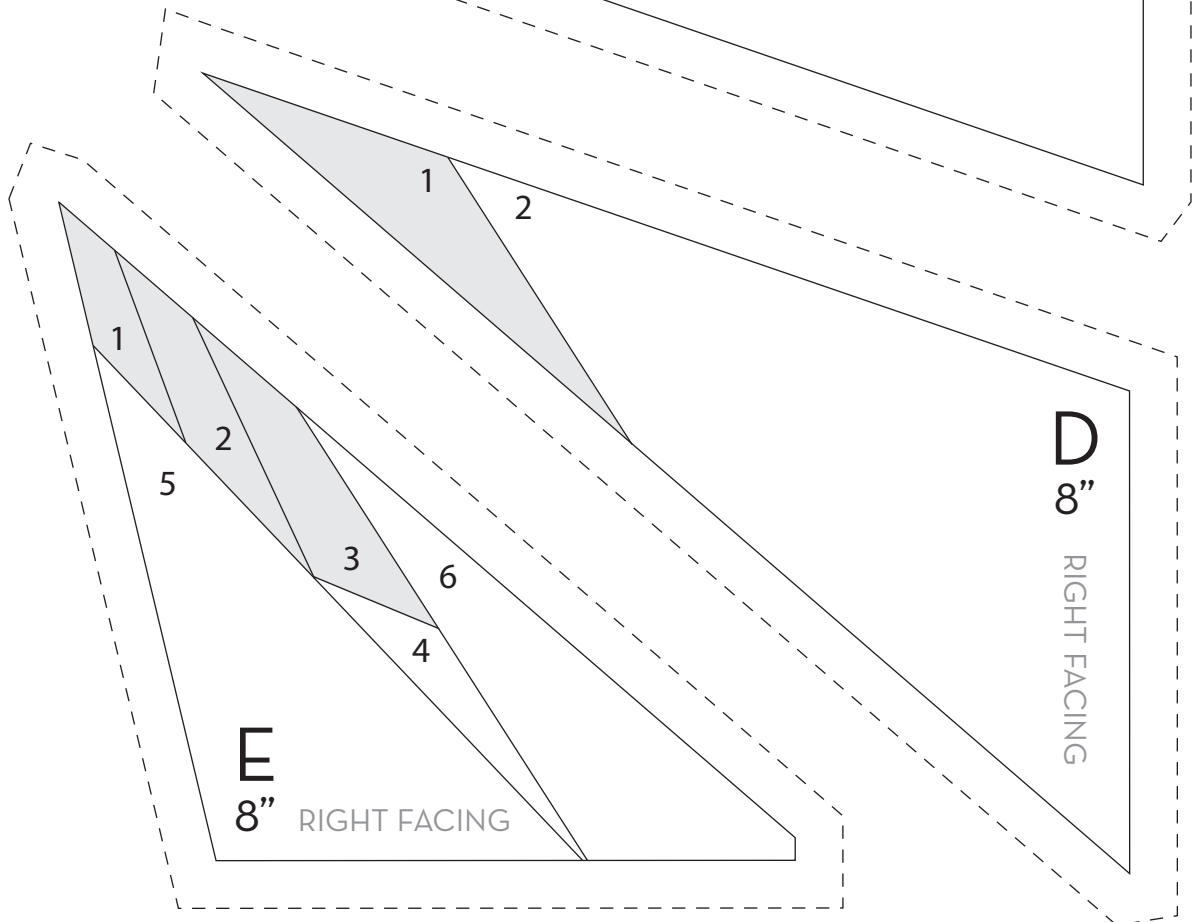
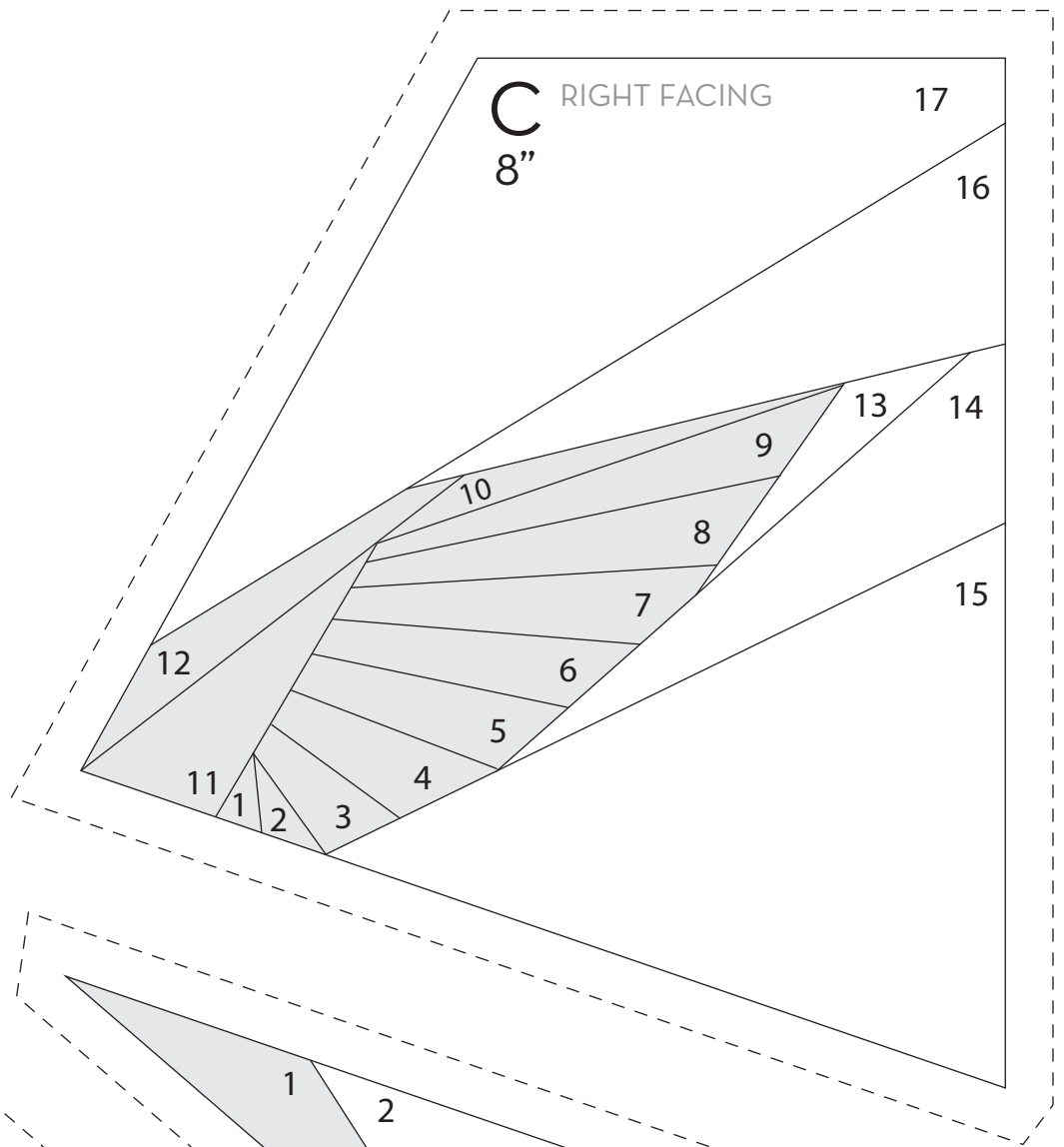
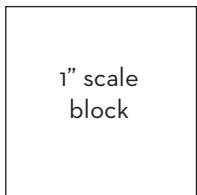


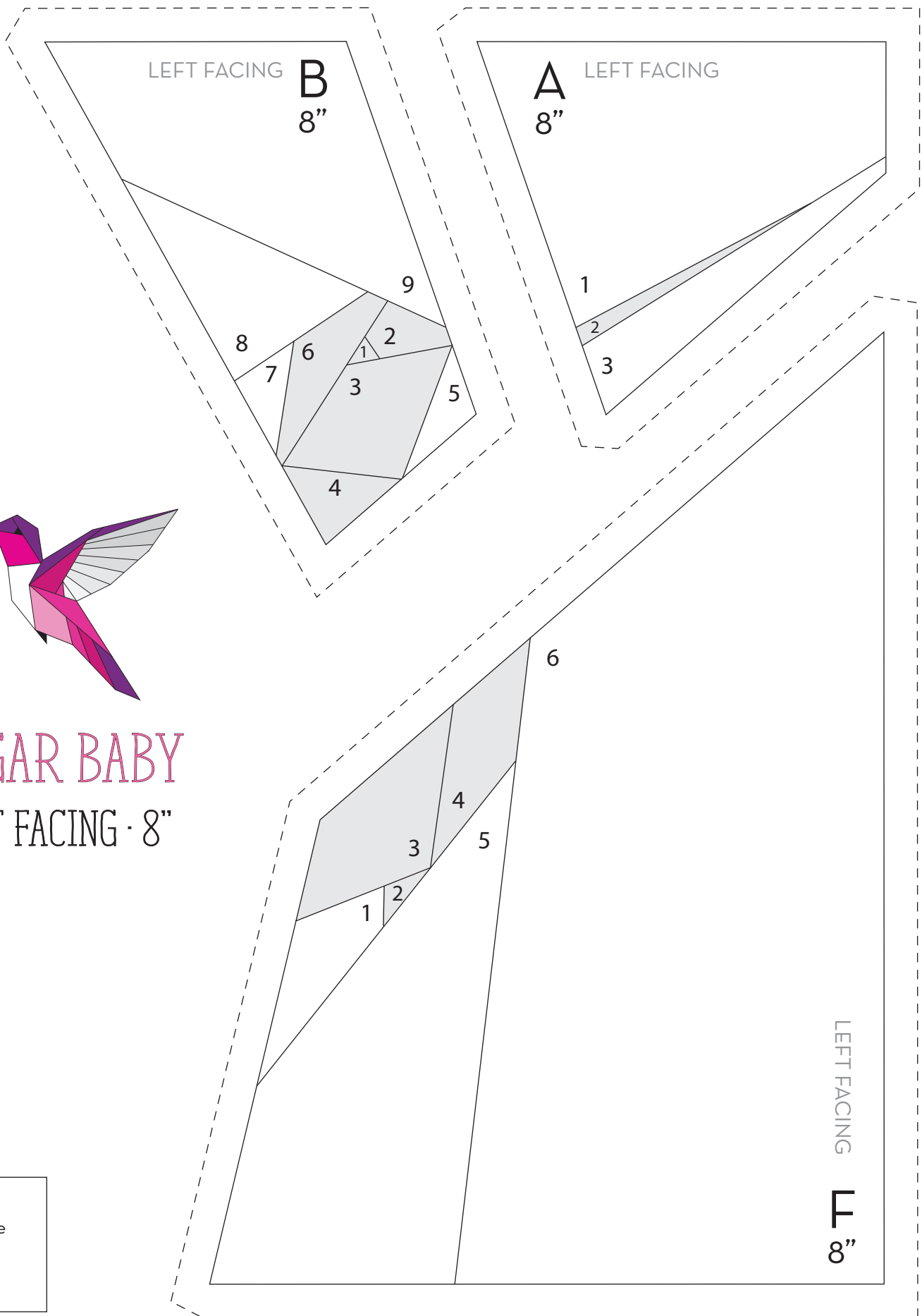




# SUGAR BABY

## RIGHT FACING · 8"

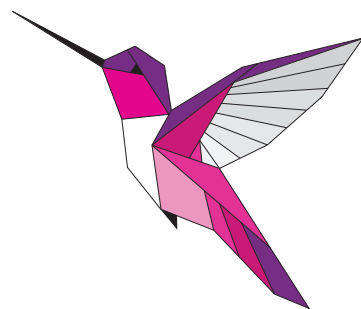




# SUGAR BABY

LEFT FACING · 8"

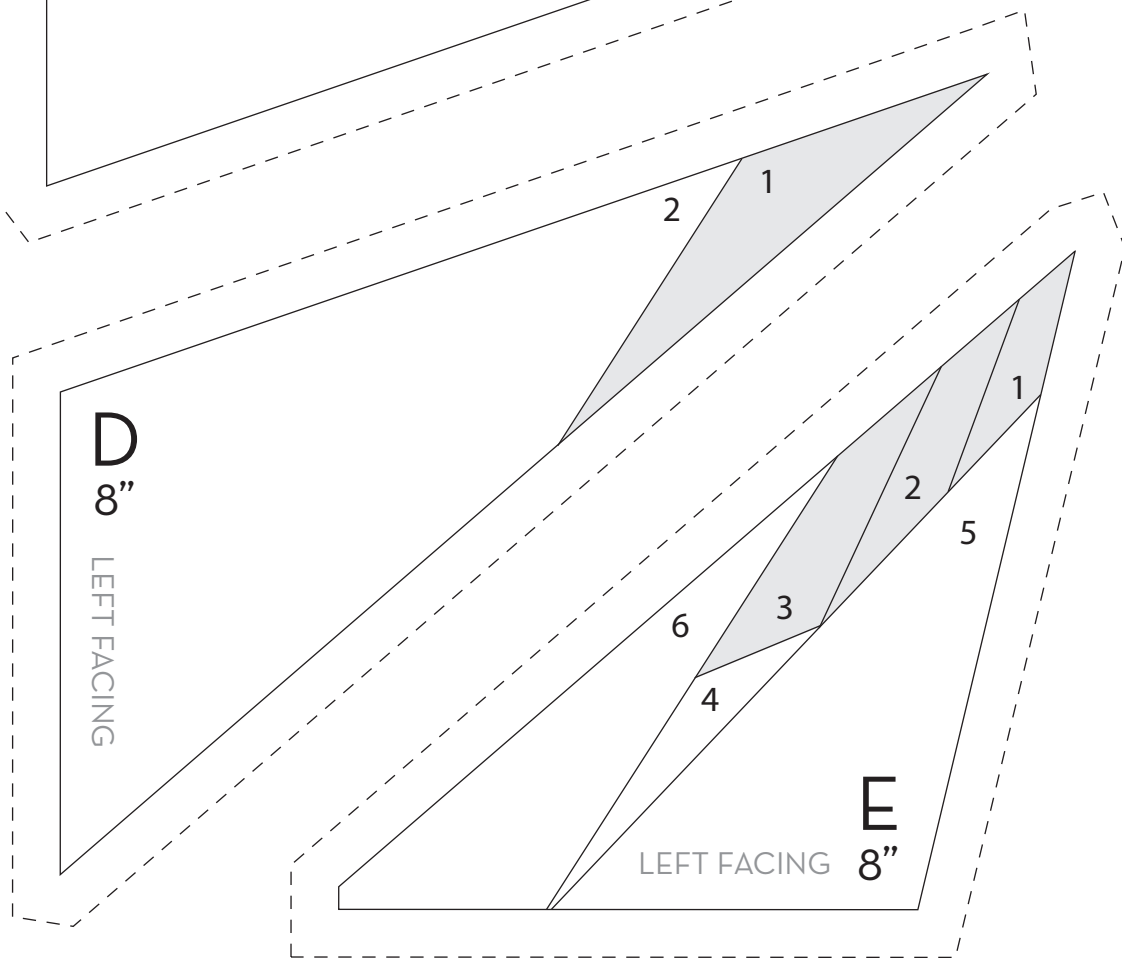
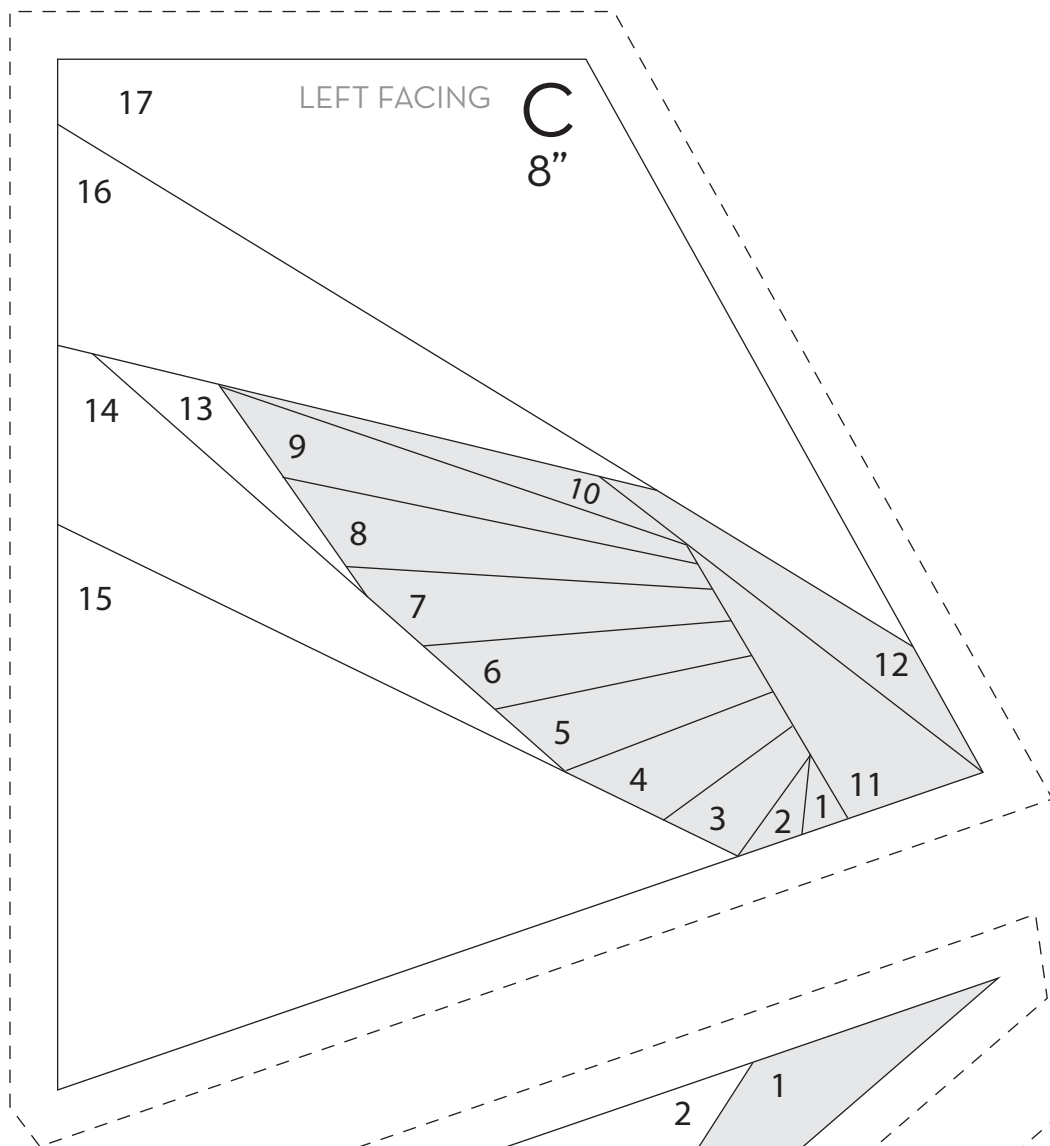




# SUGAR BABY

## LEFT FACING · 8"

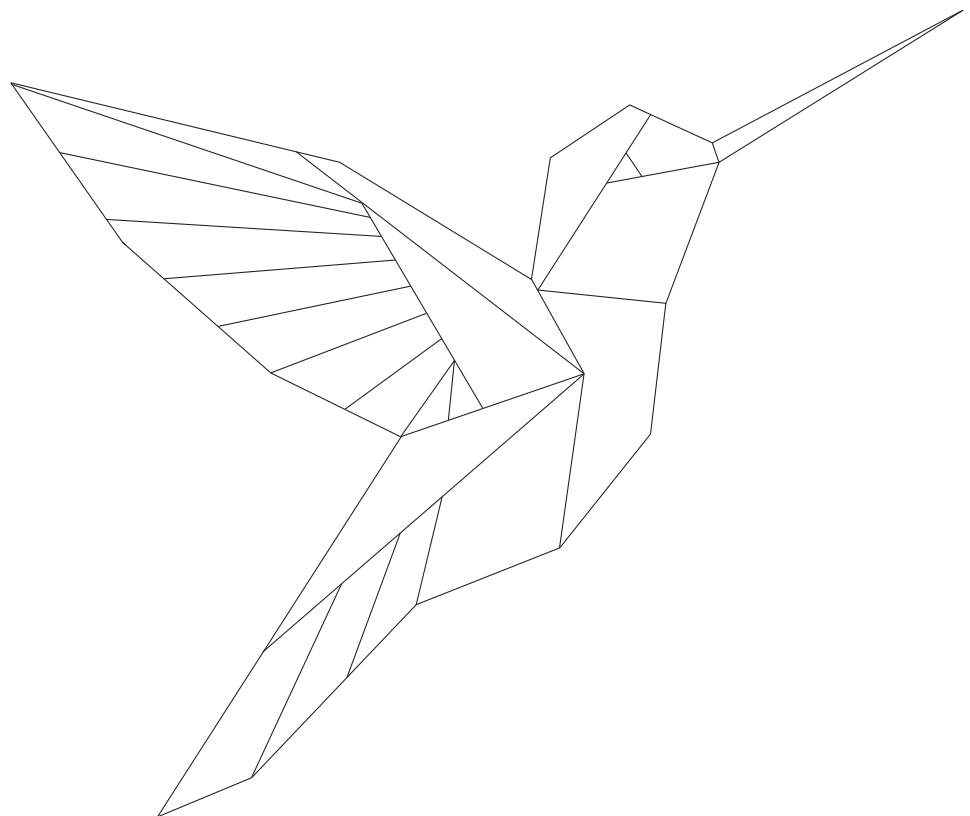
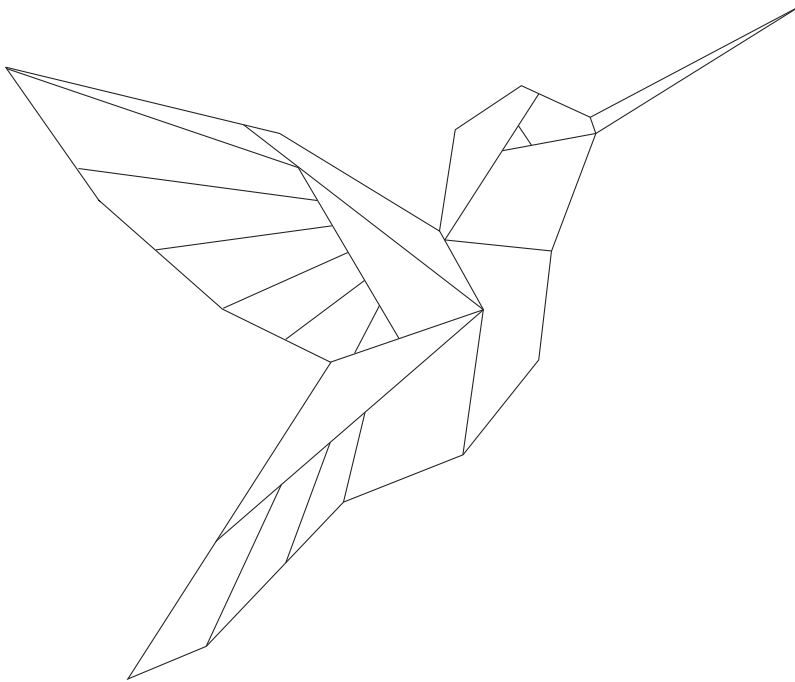
1" scale  
block



# SUGAR BABY

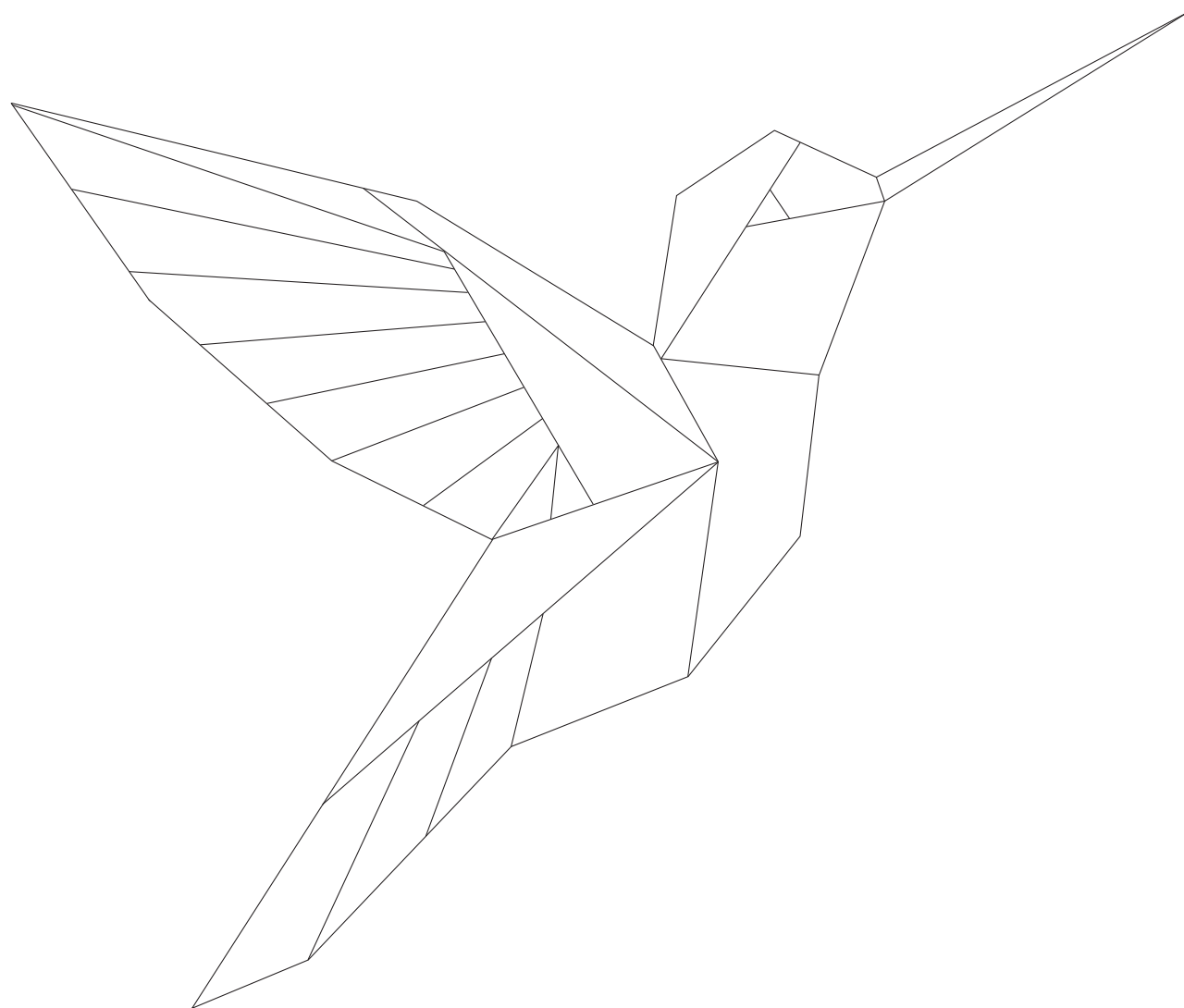
coloring page

5" & 6" shown at 100%



# SUGAR BABY | coloring page

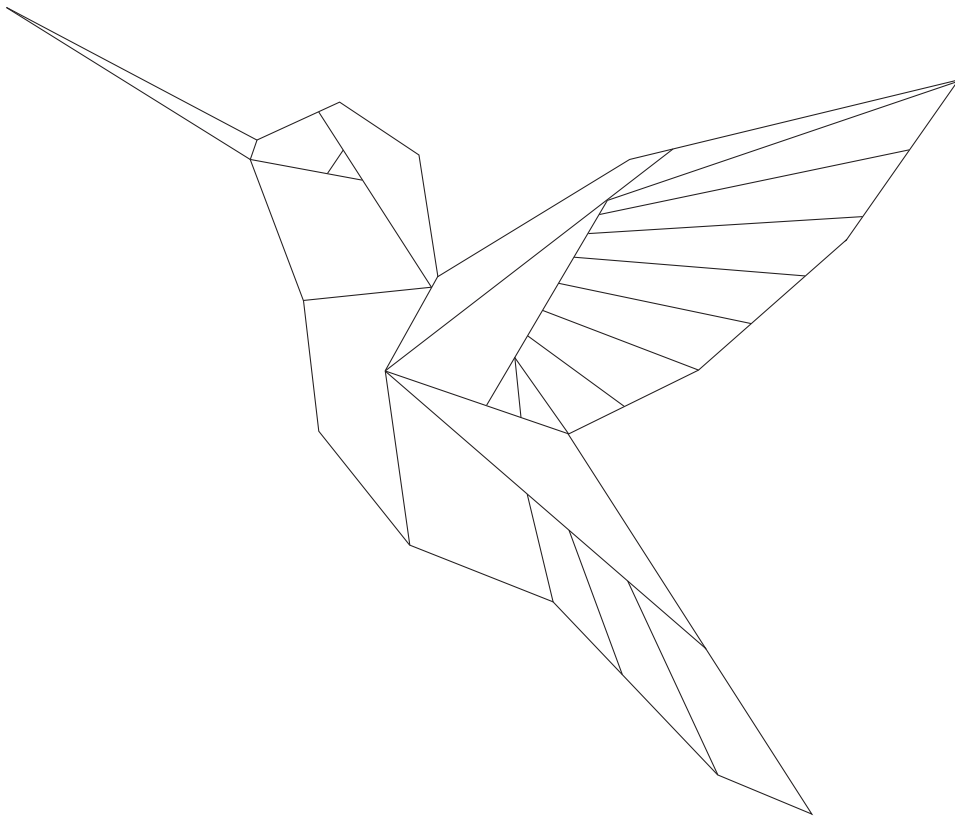
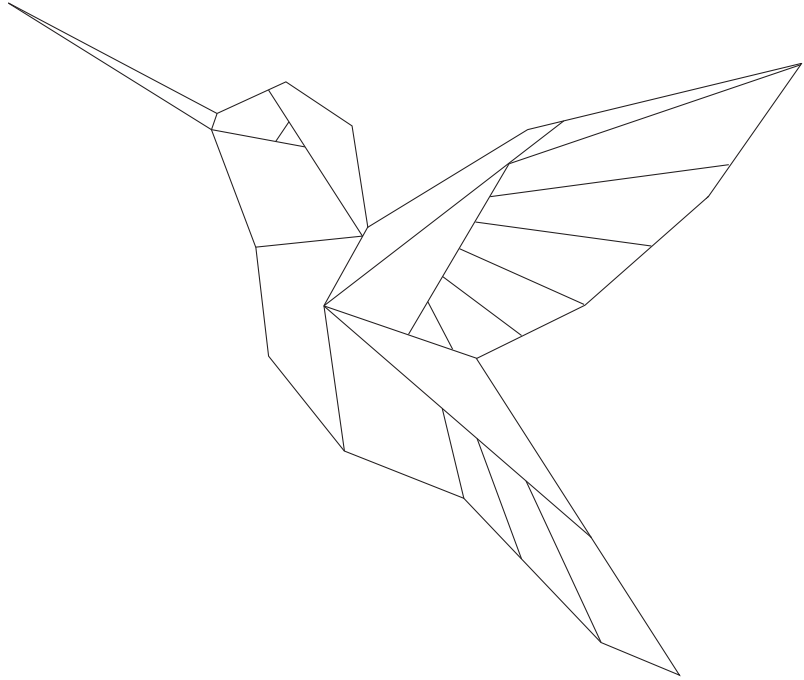
8" shown at 100%



# SUGAR BABY

coloring page

5" & 6" shown at 100%

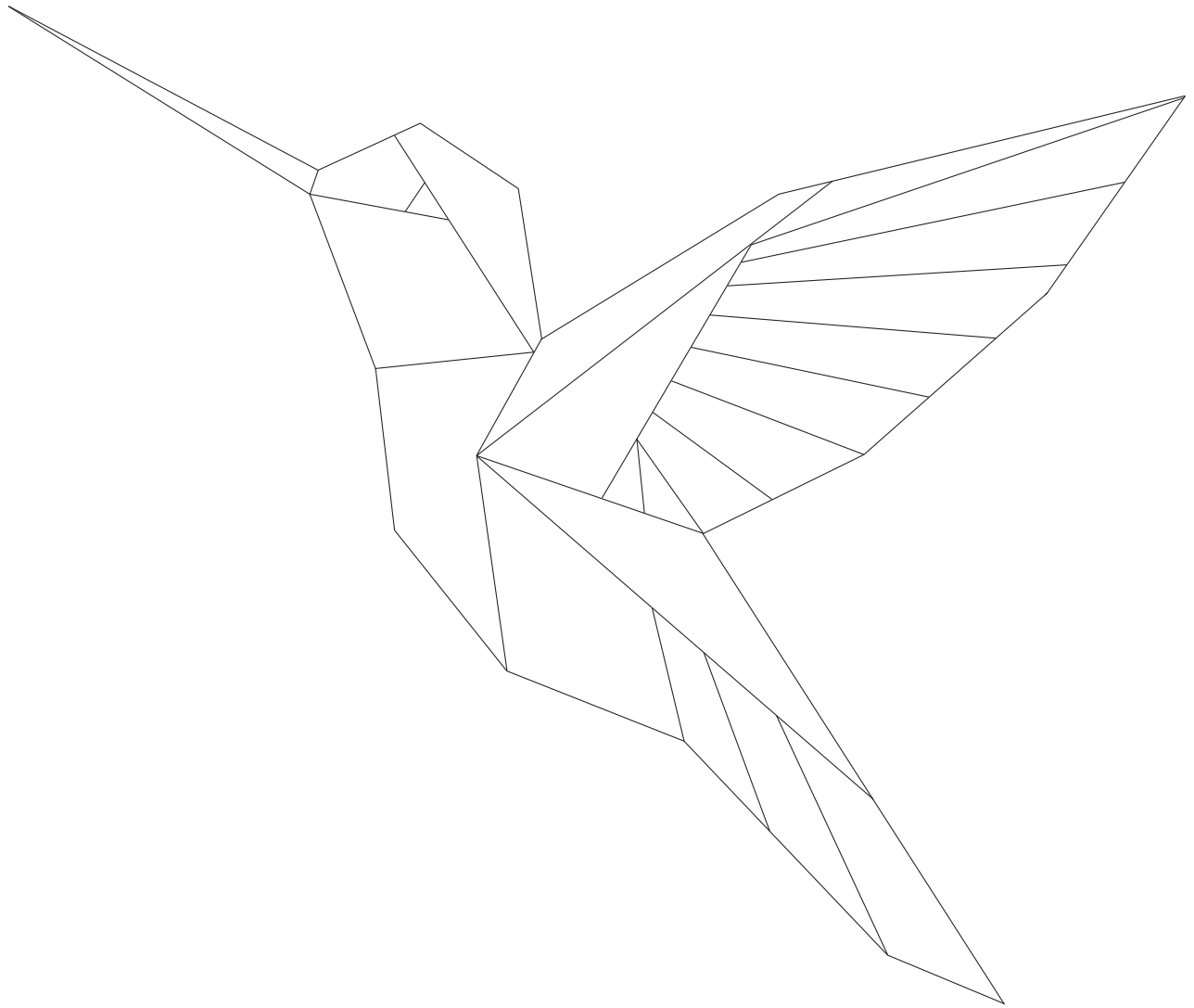




# SUGAR BABY

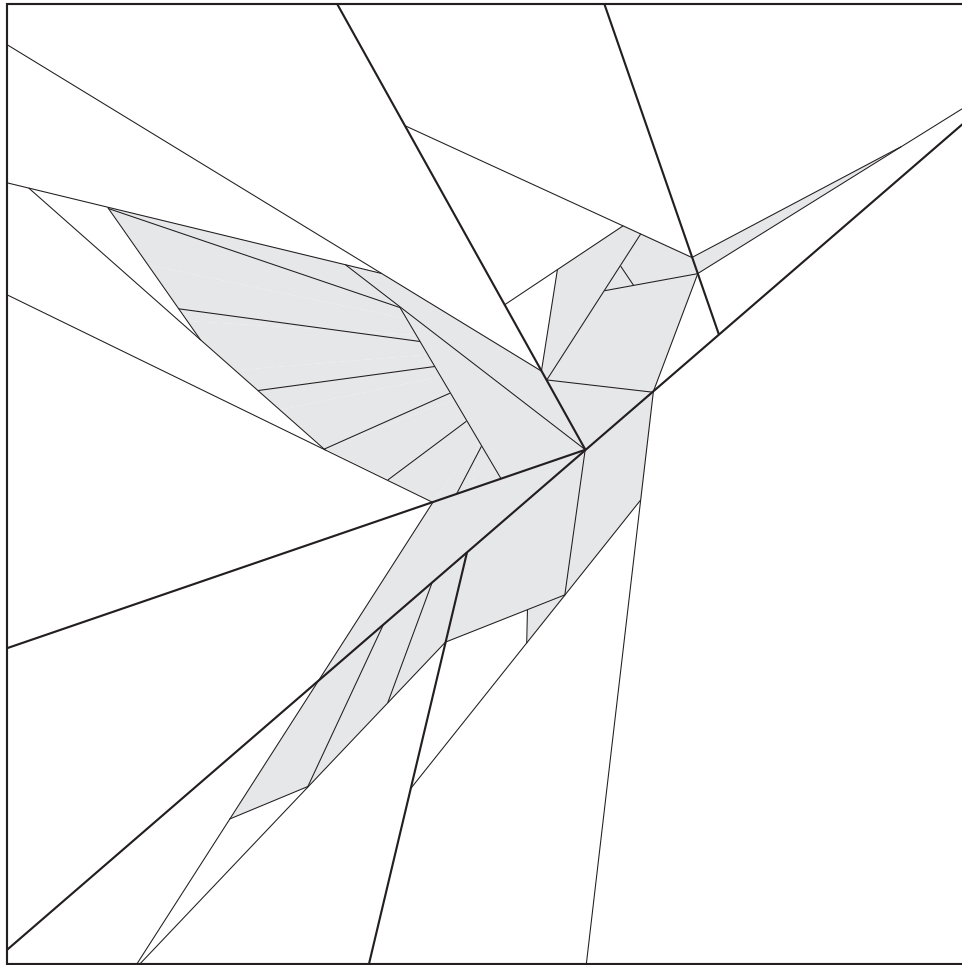
coloring page

8" shown at 100%



# SUGAR BABY

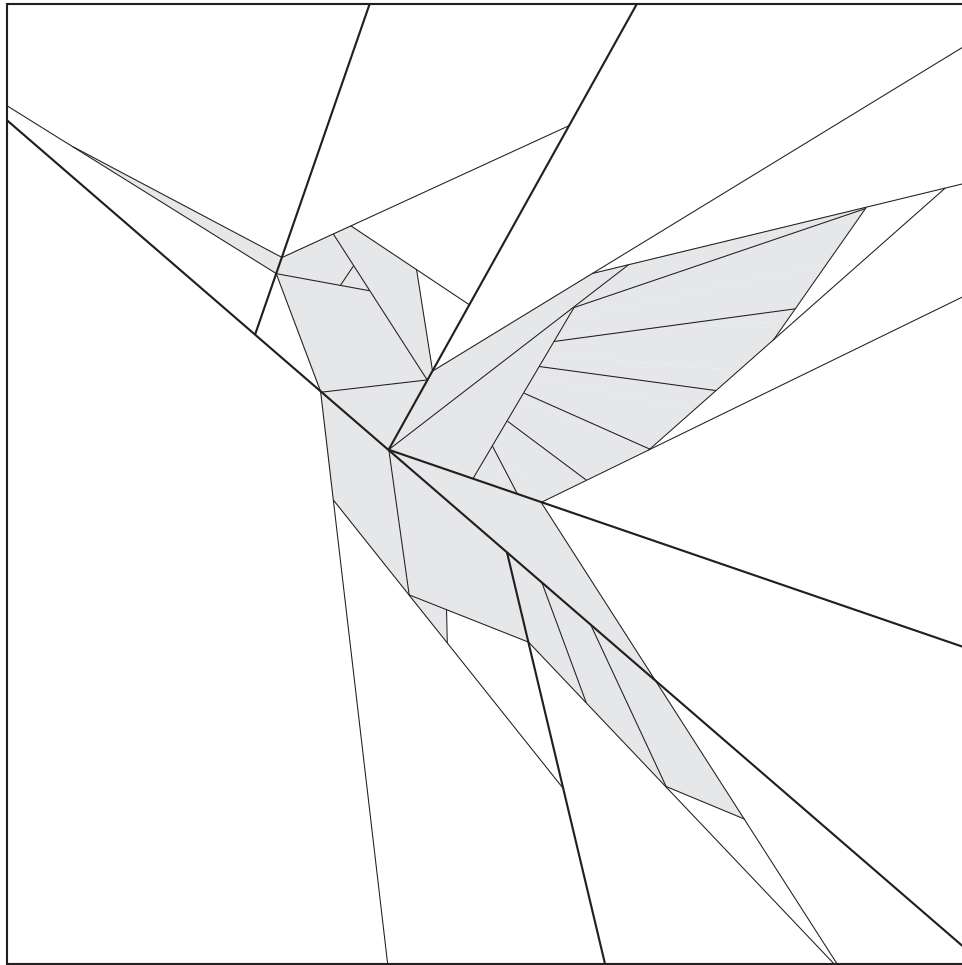
Use this diagram to make notes of your fabric placement or to sketch quilting designs.



5" shown at 100%

# SUGAR BABY

Use this diagram to make notes of your fabric placement or to sketch quilting designs.



5" shown at 100%

# SUGAR BABY

Use this diagram to make notes of your fabric placement or to sketch quilting designs.



6" shown at 100%

# SUGAR BABY

Use this diagram to make notes of your fabric placement or to sketch quilting designs.



6" shown at 100%

# SUGAR BABY

Use this diagram to make notes of your fabric placement or to sketch quilting designs.



8" shown at 100%



# SUGAR BABY

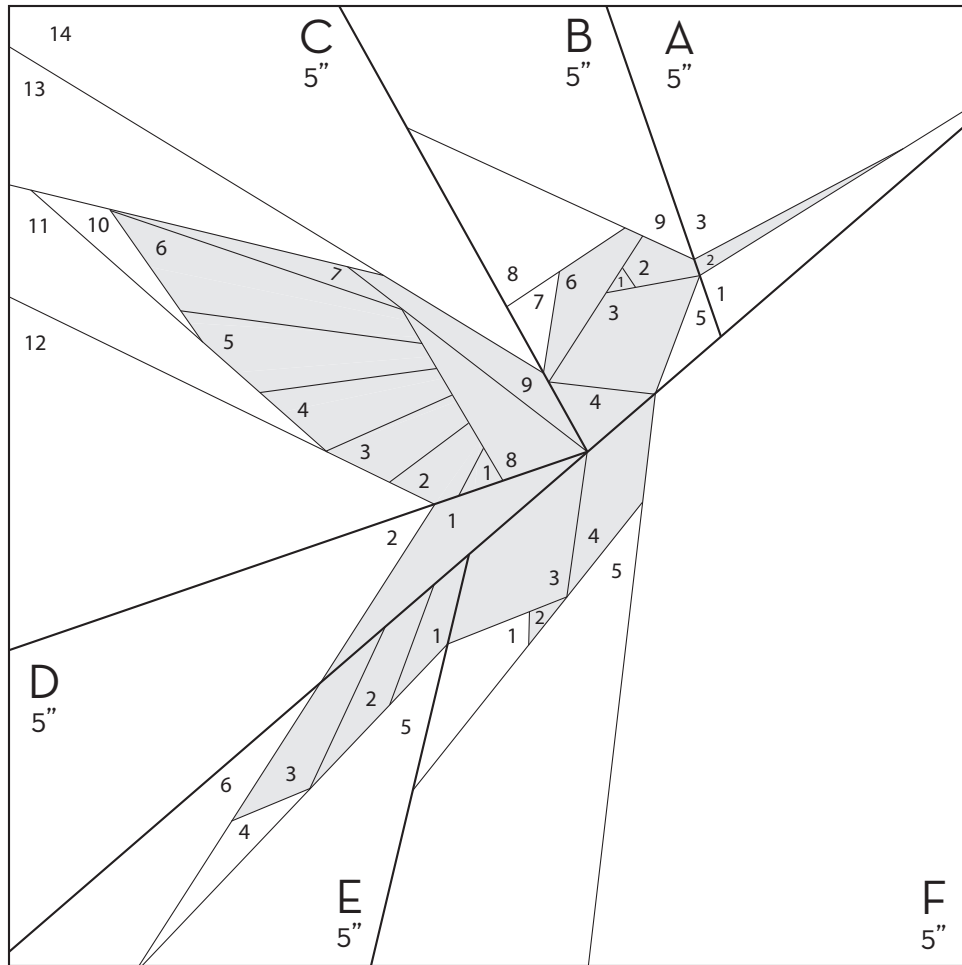
Use this diagram to make notes of your fabric placement or to sketch quilting designs.



8" shown at 100%

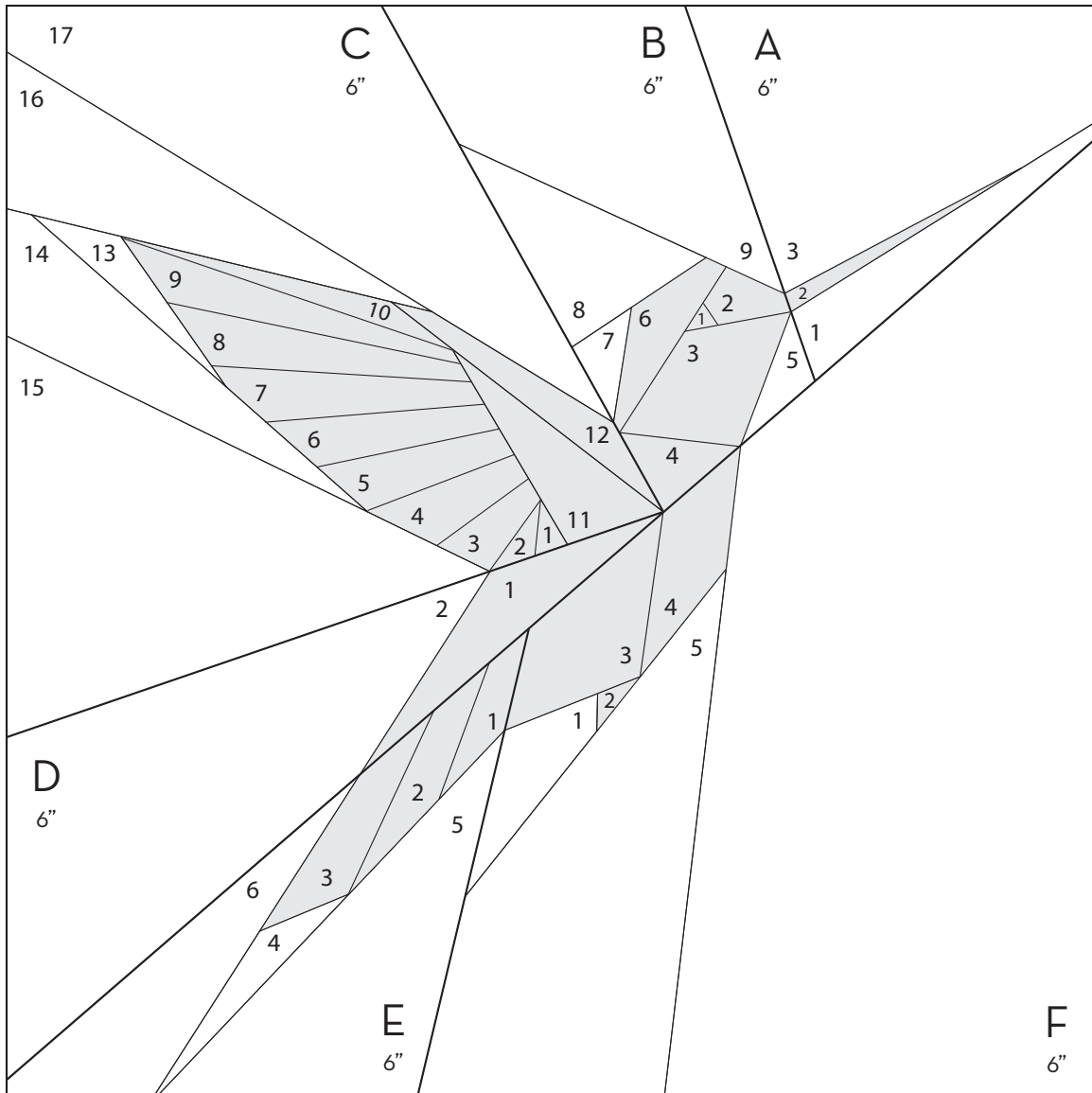
# SUGAR BABY

Section & Numbering Reference, 5"  
{Left facing pattern shown, right facing block is reversed}



# SUGAR BABY

Section & Numbering Reference, 6"  
{Left facing pattern shown, right facing block is reversed}



# SUGAR BABY

Section & Numbering Reference, 8"  
{Left facing pattern shown, right facing block is reversed}

